

## LOCATION

The address of the apartments Smart Suites Albaicín is **Calle San José Alta nº7, Albaicín**, in the old quarter of Granada.  
( 37° 10' 45.34'' N 3° 35' 48'' W ).

## RECEPTION OPENING HOURS

The reception is open from 08:00 to 20:00. If you arrive after 20:00, follow these instructions for a late auto check in:

### LATE CHECK IN INSTRUCTIONS (WITH PARKING)

- 1.-About 15 meters down the street of the main wood door on Calle San Jose Alta 7 you will a ramp.
- 2.-Go down the ramp and again to the right you will find another parking door. Open it with the code **"2015A"**, go inside and park. If this parking is complete there is another one, 10 meters further, just under the square.
- 3.-Find the elevator and go to the floor 0. As you go outside to the right you will see some wood mail boxes with black security boxes inside them. Your black box will have a letter with your name.
- 4.- Open your black box with the code **"2468"** and follow the instructions from the letter.

### LATE CHECK IN INSTRUCTIONS (WITHOUT PARKING)

- 1.-Open the main door at Calle San Jose Alta 7 with the code **"2015A"**.
- 2.-As you go inside, to the left you will find some wood mail boxes with black security boxes inside them. Your black box will have a letter with your name.
- 3.-Open you black box with the code **"2468"** and follow the instructions from the letter.

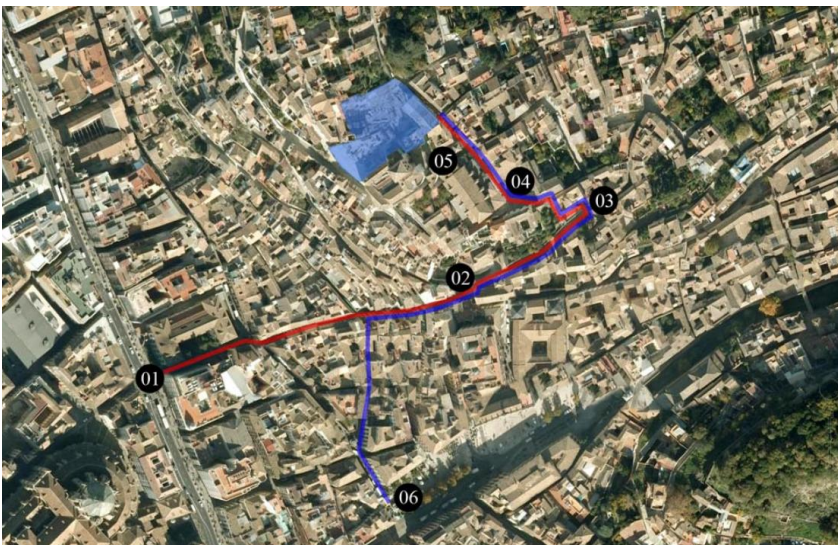
## CHECK IN / CHECK OUT TIME

Check in: From **15.00 to 20.00**  
Check out: **Before 12.00**

You can park in the garage or leave your luggage at reception from 08:00. After check out, you can ask in reception if you can leave your car or your suitcases until later.

NOTE: Due to the stone pavement of the Albaicín, carrying your luggage uphill can be difficult.

## DIRECTIONS: WALKING



**RED ROUTE:** Starting from **Gran Vía** (01) go by C/ Carcel Baja, cross C/ Elvira and continue by C/ Calderería Nueva to Plaza San Gregorio (02). Keep going by C/ San Gregorio and turn left in Cuesta San José (03), pass Placeta San José (04) and continue for 200 m by C/ San José Alta past the Alminar (05) to the entrance in C/ San José Alta nº7.

**BLUE ROUTE:** Starting from **Plaza Nueva** (06) go by C/ Elvira, turn right at C/ Calderería Vieja and continue to C/ Calderería Nueva. Turn right in C/ Calderería Nueva, keep going by C/ San Gregorio and turn left in Cuesta San José (03), pass Placeta San José (04) and continue for 200 m by C/ San José Alta past the Alminar (05) to the entrance in C/ San José Alta nº7.

## DIRECTIONS: FROM THE AIRPORT

Taxi: It takes around 25 minutes to the entrance of Smart Suites. Estimate cost 25€ - 30€.

Bus: It takes around 40 minutes to Gran Vía – Cathedral stop (01). Cost 3,5€. From there you can cross the street and take a taxi (estimated cost 5€), or you can go walking.

## DIRECTIONS: FROM THE BUS STATION

Taxi: It takes around 12 minutes to the entrance of Smart Suites. Estimated cost: 9€. (Recommended)

Bus: It takes around 40 minutes (cost 1,40€). Take the line 33 to Gran Vía/Cathedral stop. Then walk by the red route.

## DIRECTIONS: FORM THE TRAIN STATION

Taxi: It takes around 10 minutes to the entrance of Smart Suites. Estimated cost: 6€. (Recommended)

Bus: It takes around 30 minutes (cost 1,40€). Walk to to Avda de Constitución and take the line 33 until Gran Vía/Cathedral stop. Then walk by the red route.

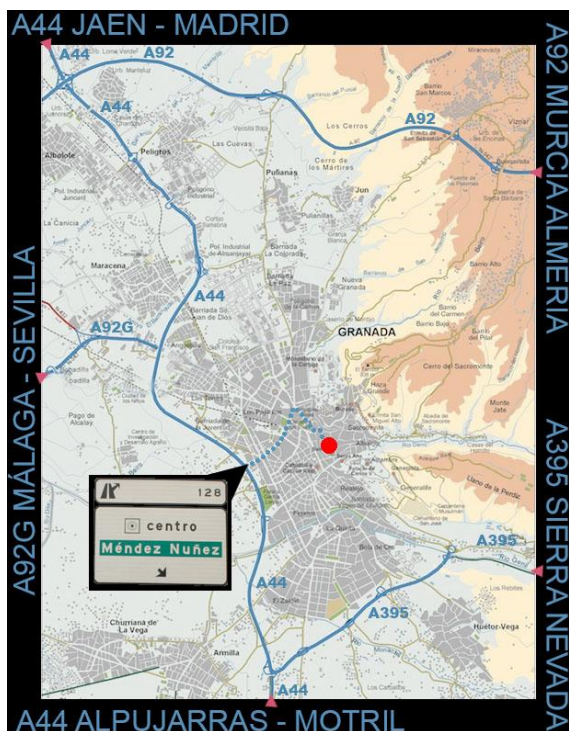
**smart suites albaicín**

+34 958 279 780

+34 647 754 280 / +34 629 086 120

C/ San José Alta nº7 –GRANADA-

ATTENTION: WE STRONGLY RECOMMEND YOU TO PRINT AND KEEP THESE INSTRUCTIONS



WARNING: Due to traffic restrictions and narrow streets, driving by the centre and the old quarter of Granada can be very tricky if you do not follow the instructions below. The GPS will NOT work in Granada. At the moment ONLY Google Maps works properly, but still we strongly recommend you to follow the instructions listed below. We do not recommend to drive through the Albaicín with a large van. It can be very hard if you are not used to drive by old quarters and narrow streets, especially if you do not know the area.

-If you are coming from the north (Madrid/Jaén) by the A44, continue through GR30 until 12 “Méndez Núñez” exit and follow the indications.

-If you are coming from the west by the A92 (Sevilla/Málaga), pass the airport exit and divert by the A92G (exit 230). Continue for 10km until you reach the GR30. Take the GR30 towards Motril, continue until 12 “Méndez Núñez” exit and follow the indications.

-If you are coming by the A92 from the east (Guadix/Murcia), Google Maps will divert you too soon. Continue by the A92 until you cross the GR30. Take the GR30 towards Motril, take the 12 Mendez Núñez exit and follow the indications.

-If you are coming from the south by the A44 (Costa-Motril), continue through GR30 until 12 “Méndez Núñez” exit and follow the indications.



01

-LEAVE A44 BY 128 “CENTRO MENDEZ-NUÑEZ” EXIT.

-LEAVE THE ROUNDABOUT AND CONTINUE BY “MENDEZ NUÑEZ” FOR 1,4KM UNTIL TUNNEL.



02

-GO THROUGH THE TUNNEL ON THE RIGHT LANE

**PROBLEM 01:** I lost the route in the Access to the city.  
**SOLUTION:** If you have GPS of any kind, ask it to take you to “ Avenida Capitán Moreno nº1 ” and continue from picture 05.

smart suites albaicín

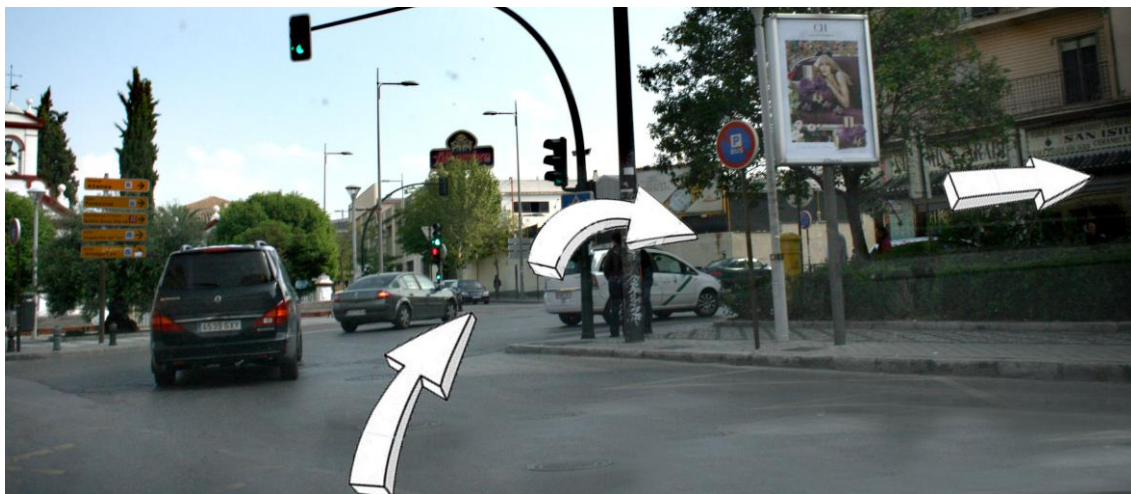
+34 958 279 780

+34 647 754 280 / +34 629 086 120

C/ San José Alta nº7 –GRANADA-

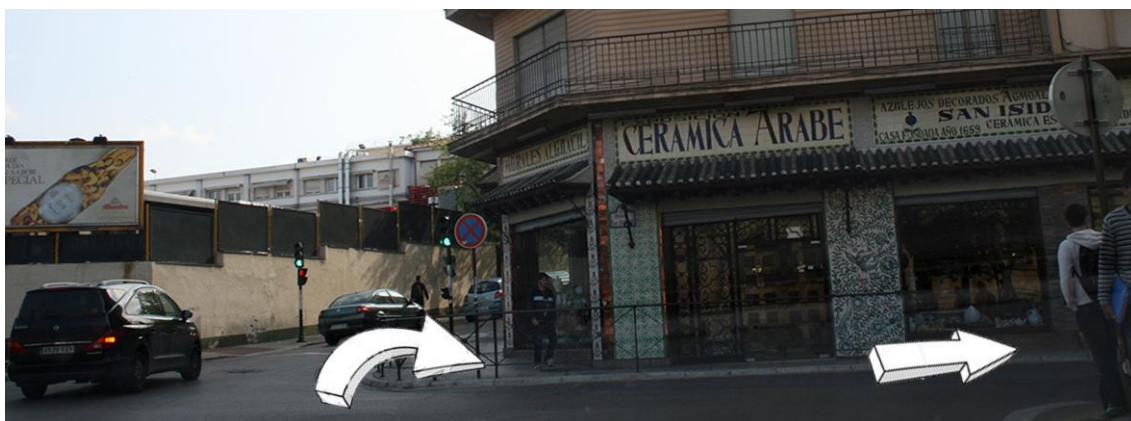


ATTENTION: WE STRONGLY RECOMMEND YOU TO PRINT AND KEEP THESE INSTRUCTIONS



03

-LEAVE THE TUNNEL AND TURN RIGHT AT THE TRAFFIC LIGHT, AND AGAIN TURN RIGHT.



04

-CONTINUE BY CALLE "ANCHA DE CAPUCHINOS" FOR 600 M UNTIL ROUNDABOUT CAREFUL! At the traffic light you need to turn right TWICE. If you only make the first turn you will go uphill and you will pass by the Cervezas Alhambra factory. Check "problem 01".



05

-AT THE ROUNDABOUT TAKE THE SECOND EXIT.



You are allowed to pass. Whenever you see this sign, you'll have to go up. We will put your license plate in the system.

smart suites albaicín

+34 958 279 780

+34 647 754 280 / +34 629 086 120

C/ San José Alta nº97 -GRANADA-



ATTENTION: WE STRONGLY RECOMMEND YOU TO PRINT AND KEEP THESE INSTRUCTIONS



06

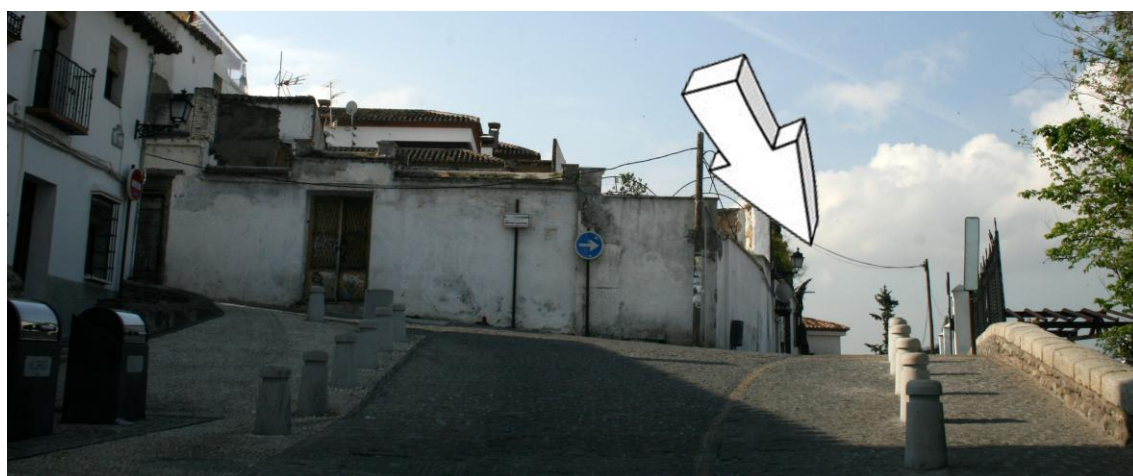
-TURN LEFT AND CONTINUE BY CALLE "CRUZ DE ARQUEROS".



07

-KEEP GOING BY "CARRIL DE LA LONA" FOR 200 M.

(Ignore the no through sign) ATTENTION The house has been demolished, now there is a white wall.



08

-CONTINUE TO THE RIGHT BY CALLE "CRUZ DE QUIRÓS".

**PROBLEM 03:** There is a sign of no through road.  
**SOLUTION:** Trust our indications and keep going. The whole Albaicín is full of these signs.

**PROBLEM 04:** We went by c/ Zenete.  
Go in reverse until roundabout in picture 05.

smart suites albaicín

+34 958 279 780

+34 647 754 280 / +34 629 086 120

C/ San José Alta nº7 -GRANADA-



ATTENTION: WE STRONGLY RECOMMEND YOU TO PRINT AND KEEP THESE INSTRUCTIONS



09

-TURN LEFT TOWARDS CALLE "BOCANEGRA".



10

-TAKE THE FIRST RIGHT TOWARD CALLE "SAN JOSE ALTA".



11

-KEEP GOING BY "SAN JOSÉ ALTA" ABOUT 100M UNTIL THE GARAGE ACCESS.

smart suites albaicín

+34 958 279 780

+34 647 754 280 / +34 629 086 120

C/ San José Alta nº7 –GRANADA-